

# Versatile Utility Hovercraft available!

**Ex-Swedish M-10X Made of Carbon Fibre Reinforced Sandwich**



In 1998 the Swedish Armed Forces ordered a tailor made versatile hovercraft for operations in the very cold northern Baltic waters. The shipyard Kockums built the M-10X, which is made of one of the most resistant materials - carbon reinforced resin.

The highly sophisticated hovercraft is equipped with a bow ramp and a detachable roof to load cargos like for example 20" Containers. The bow ramp has been designed for four-wheel trucks and light tracked vehicles.

A top speed of 50 knots could be achieved on ice or calm water. The travel speed of 30 knots over water is reached with its full load of 8.8 tons cargo or up to 80 Passenger. Two water-cooled robust Scania-cylinder (500 kW) diesels are driving the variable pitch propellers and the skirt blowers. An APU-Diesel with 16 kW ensures electric

power in the stand-by mode. The craft is fully heated. Even if there are outside temperatures of  $-35^{\circ}$  the crew will stay warm. The craft is very manoeuvrable by using air rudders, the VP-propellers and the skirt-shift-system. Operations on the ice, shores, swamps, river bends and open waters are possible without restrictions.

The closed engine room protects all the mechanic and electric systems. The extreme robustness of the lightweight hull prevent minor or major damages in harsh environments. Noise is limited by the engine room insulation and the propeller ducts. The M-10X is currently the only hovercraft that is special designed for the arctic or other remote areas. The craft is offered for sale or for charter. Crew Training, crewing and support is available on demand.

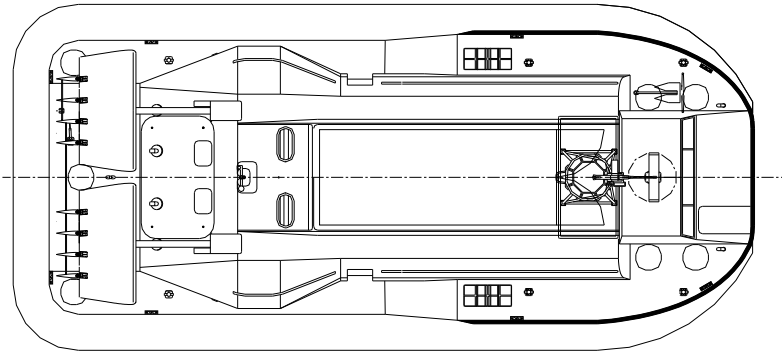
An Inspection is possible in Germany.



**ELBE-SEA-SERVICES**

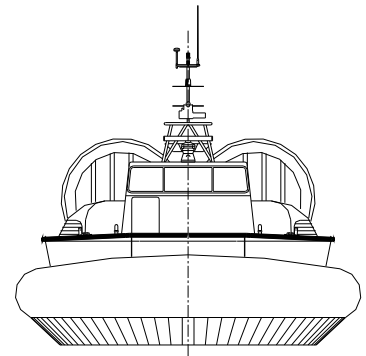
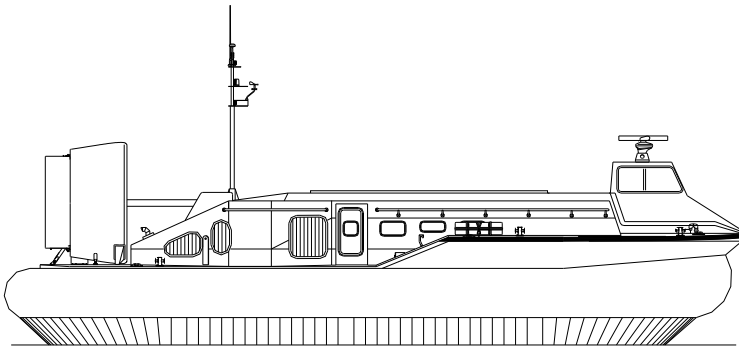
ELBE-SEA-SERVICES - Im Hollergrund 29 - 28357 Bremen - Germany  
Phone: +49 (0)421-276 02 90 Email: c.schramm@elbe-sea-services.com

© 2011 All rights reserved including publishing in any media



**ABMESSUNGEN**

LüA:	18,84 m
Länge nur Rumpf:	17,94 m
Breite ü.A.:	8,83
Breite nur Rumpf:	7,3 m
Bodenfreiheit schwebend:	1 m
Höhe (Luftschraubenmäntel):	5,2



**M-10X Specifications**

Length	18.84 m	Fuel Oil	3,000 LT
Beam	8.8 m	Max. Weight	26 tons
Hover Height	1 m	Passengers	50 - 80 depending on layout
Engines	2 X Scania DS14 Diesel, each 500 kW	Crew	2 - 3
APU	1 X Kohler Diesel GenSet 16 kW	Cargo	8.8 tons (1 X ISO Containers 20" or typical four-wheeled vehicles)
Propulsion	Hoffmann Variable Pitch Propellers	Equipment	Ferry bow ramp, detachable seats / stretchers, chem. toilet, cargo bay heating, detachable roof
Max. Speed	50 Kts		
Service Speed	30 - 40 Kts (depending on Sea State)		

We accept no liability from any person or entity arising from reliance on this correspondence or information. Details are believed to be correct, but are not guaranteed. We have not necessarily inspected vessels or crafts offered for sale and vessels or crafts offered are subject to availability. All vessels or services offered or provided by ELBE-SEA-SERVICES are as brokers only and no warranty or representation shall be given or intended.



**ELBE-SEA-SERVICES**

**ELBE-SEA-SERVICES** - Im Hollergrund 29 - 28357 Bremen - Germany  
Phone: +49 (0)421-276 02 90 Email: c.schramm@elbe-sea-services.com

© 2011 All rights reserved including publishing in any media